



## Mark I DustGuard® 1-3/8" Blind

Model #MARK138

**Top quality 1-3/8" wide slat horizontal aluminum window covering for exposed headrail in contemporary commercial applications.**



### KEY FEATURES:

- Exclusive 1-3/8" slat size
- DustGuard
- Valance free design
- Headrail: 1.475" high x 1.625" wide with crowned underside profile
- Enclosed bottomrail with bottom bumper
- Nominal .0090" slat thickness
- 11 slats per foot
- Guardian Tilter™ disengaging clutch mechanism
- Cordless option available
- Lifetime warranty

### PRODUCT OVERVIEW

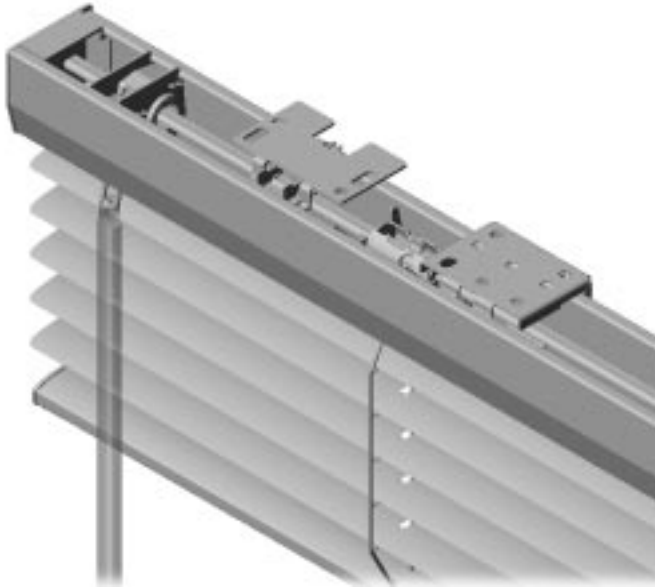
The Mark I DustGuard 1-3/8" Blind represents Levolor's top quality horizontal blind with the exclusive 1-3/8" wide slats, ideal for more contemporary environments. Engineered for both durability and aesthetics, the Mark I DustGuard 1-3/8" Blind combines a valance-free headrail design with a concealed mounting system to provide an overall clean, finished look.

The DustGuard feature is a permanent paint process that disrupts the natural static attraction of dust particles to the slat. By removing the primary reason blinds attract dust a 50–70 percent reduction in accumulation can be achieved. Less dust means less maintenance and a cleaner, more professional appearance. The valance-free headrail is made of roll-formed corrosion-resistant Tomized® steel and has a crowned underside profile to prevent light leakage. The added feature of the concealed mounting system provides a clean finished look and eliminates the extra cost of an extruded pocket mullion. The bottomrail is fully enclosed with a color compatible bottom bumper designed to prevent marring of the window sill and mullions.

The nominal .0090" thick slats are made of high grade magnesium aluminum alloy which provides superior strength and resiliency, guaranteeing a quality look for the life of the blind. The Mark I DustGuard 1-3/8" Blind has 11 slats per foot to ensure tight closure and superior light control. The exclusive Guardian Tilter disengaging clutch mechanism eliminates over rotation of the tilt wand and protects the tilt mechanism against breakage.

The Mark I DustGuard Blind 1-3/8" is offered in a large selection of popular colors and options.

# Mark I DustGuard® 1-3/8" Blind



## PRODUCT SPECIFICATIONS

For more detailed specifications please reference Mark I Grande DustGuard 1-3/8" Blind product Guide Specifications.

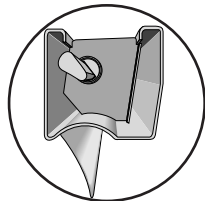
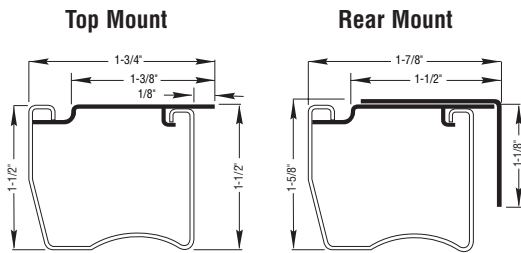
### Part II – Products

**A. Mark I Grande DustGuard 1-3/8" (35 mm) Blind manufactured by Levolor**

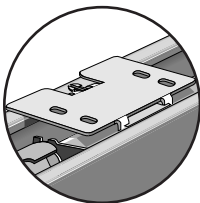
**B. Lifetime Warranty**

**C. Materials:**

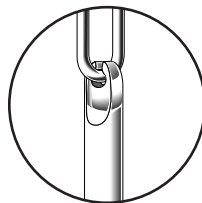
- Headrail** shall be of .025" thick Tomized, steel, 1.475" high x 1.625" wide, with a crowned underside profile to prevent light leakage. Headrail shall be a valance-free design. All headrail detailing shall be polyethylene. All hardware shall be enclosed in the headrail.
  - Guardian Tilter** shall be automatically disengaging worm and gear mechanism to eliminate overdrive.
  - Tilt Wand** shall be solid, clear, transparent polymer with round cross section of 5/16" diameter. The tilt wand mechanism shall exit the bottom of the headrail via a U-shaped black or bright metal-plated steel link.
  - Drums and Cradles** shall be of Tomized steel.
  - Installation Brackets** shall consist of two interconnecting pieces. One of the pieces is designed for ceiling mount applications and shall be completely concealed within the headrail. A second piece interconnects with the ceiling mount piece to convert the bracket for use in wall mount applications.
  - Ladders (slat supports):** Distance between slats shall not exceed 27.7 mm (nominally 11 slats per vertical foot).
  - Slats** shall be of 5000 series magnesium aluminum alloy only which includes recycled aluminum materials. Slats shall be nominally 1.375" wide and .0085" ± .0003" thick (prior to coating); after coating, the thickness of the slats shall be nominally .0090".
- Coating includes **DustGuard**, a patented paint process which disrupts the natural static attraction of airborne dust particles, reducing dust build up on the slat from 50–70 percent.
- Bottomrail** shall be fully enclosed with color compatible flexible PVC bottom bumper and polyethylene end caps.
  - Options** shall include:
    - a. Hold-down Brackets
    - b. Cordless (model # MARK138C)



Headrail/Top Slat Detail



Mounting Bracket



Wand Connection Detail



Levolor  
4110 Premier Dr.  
High Point, NC 27265

© Copyright 2003 Levolor. All rights reserved. US and non-US patents and patents pending. Product specifications are subject to change without notice. Printed in the USA.

Contract Customer Service  
1-800-826-8021  
www.levolorcontract.com